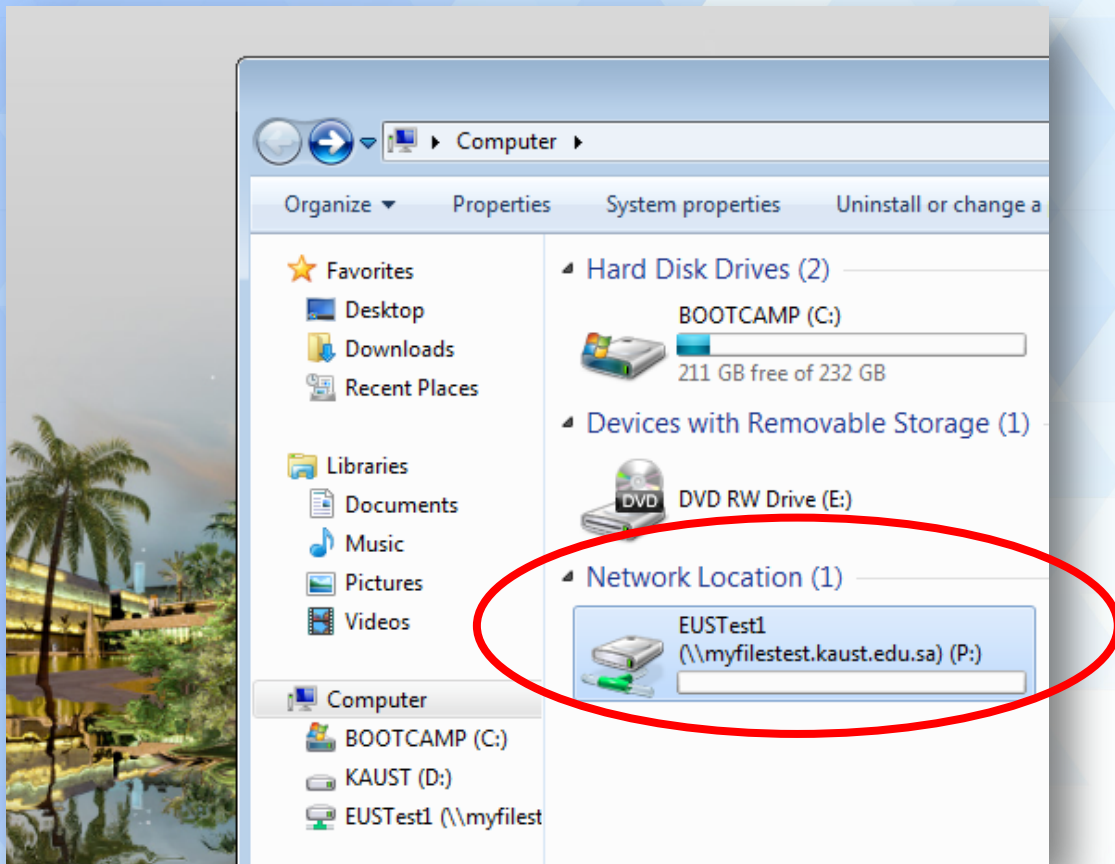


KAUST Provided Device: Windows 8+

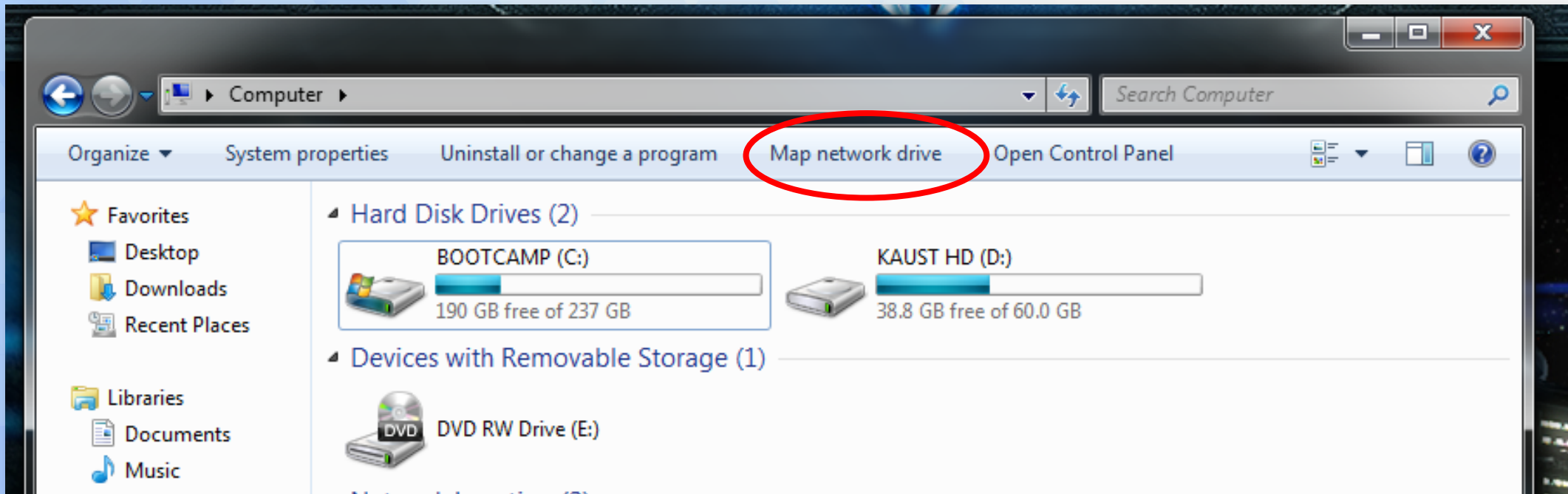
Upon login, P:\ drive will be automatically mapped as a network drive. To view/access, please go to "My Computer "... see below screen shot.



Please note:
myfiles.kaust.edu.sa is the server address.

Personal Device – Windows 8+

For those machines that are not on the KAUST Domain, such as a personal machine or laptop, P-drive will not automatically mapped upon login. To access the P:\ drive, please open My Computer and then from the menu bar click "Map network drive".



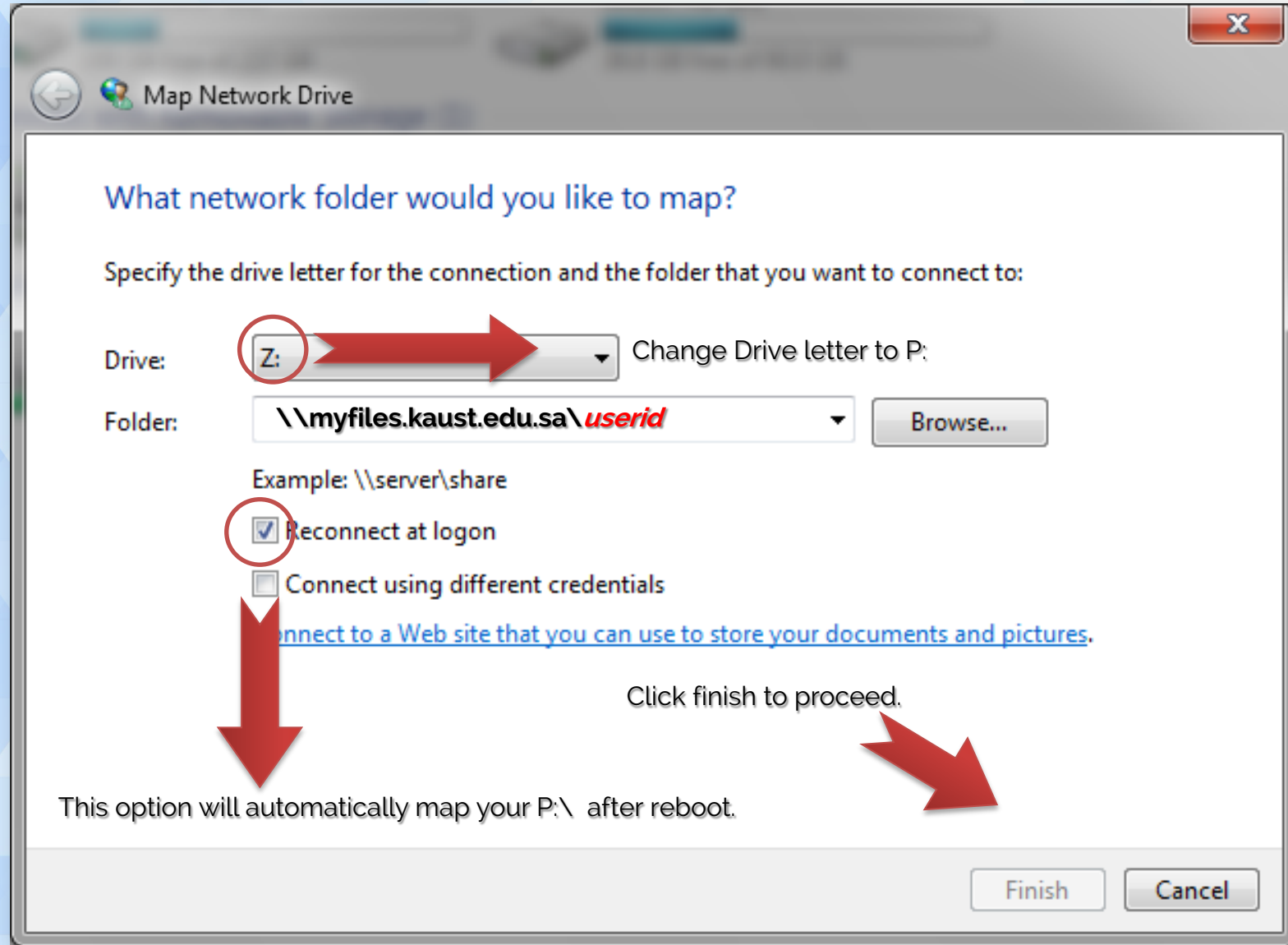
Map network drive is where you connect shared folder across the network.

Personal Device – Windows 8+

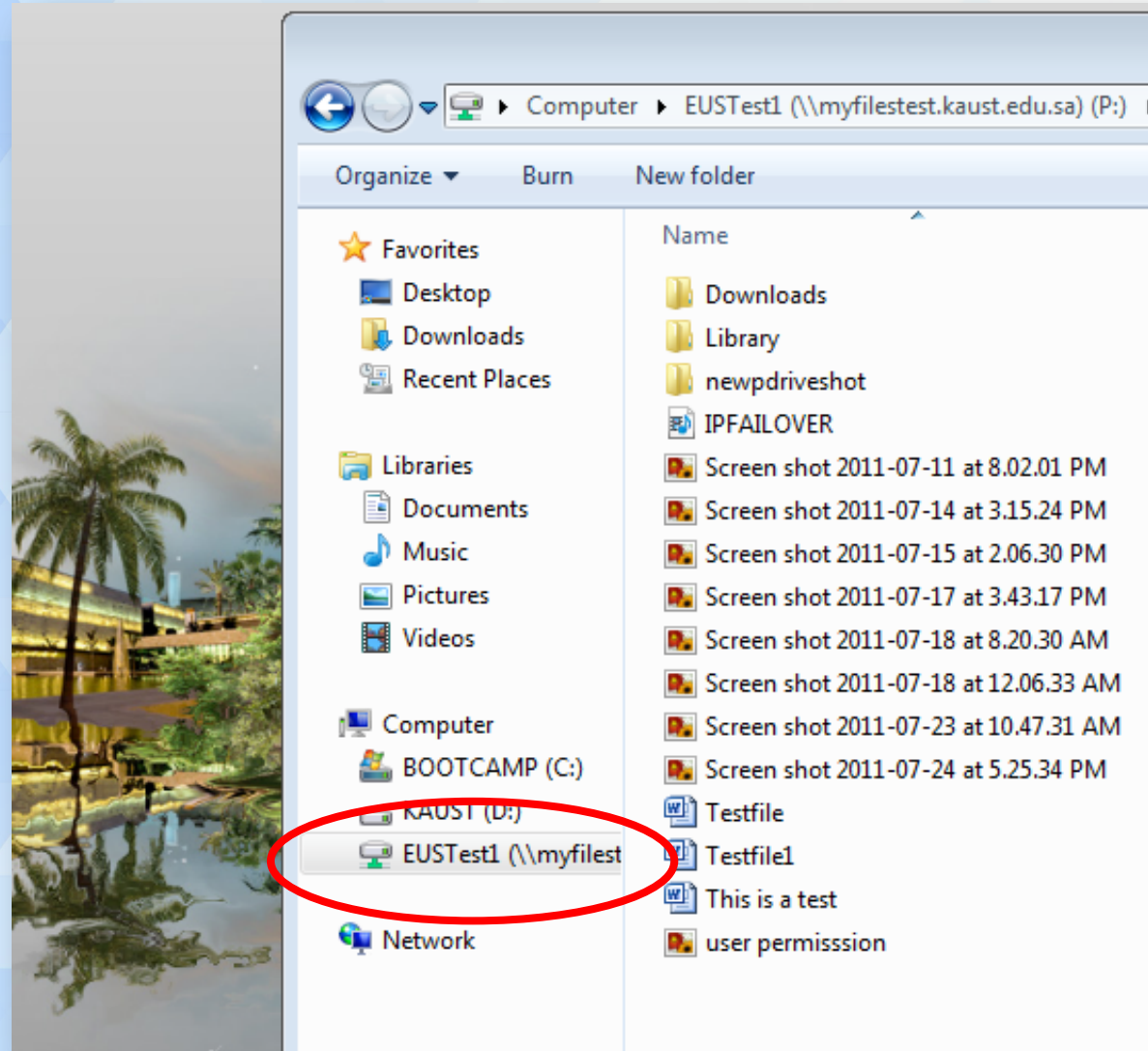
Continued

Please Note:
USERID is the same as
your Portal/AD/
Exchange ID.

Be sure to change it to
your own user ID, for
example: smithjs.

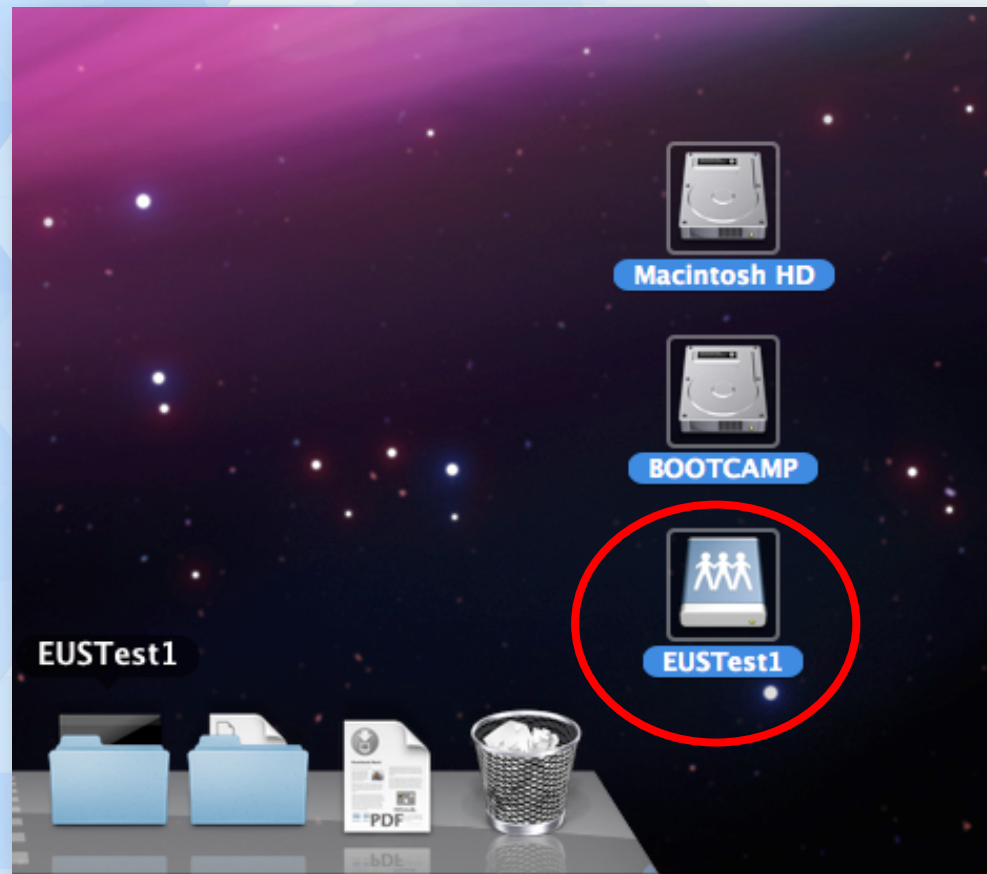


Personal Device – Windows 8+ *Continued*



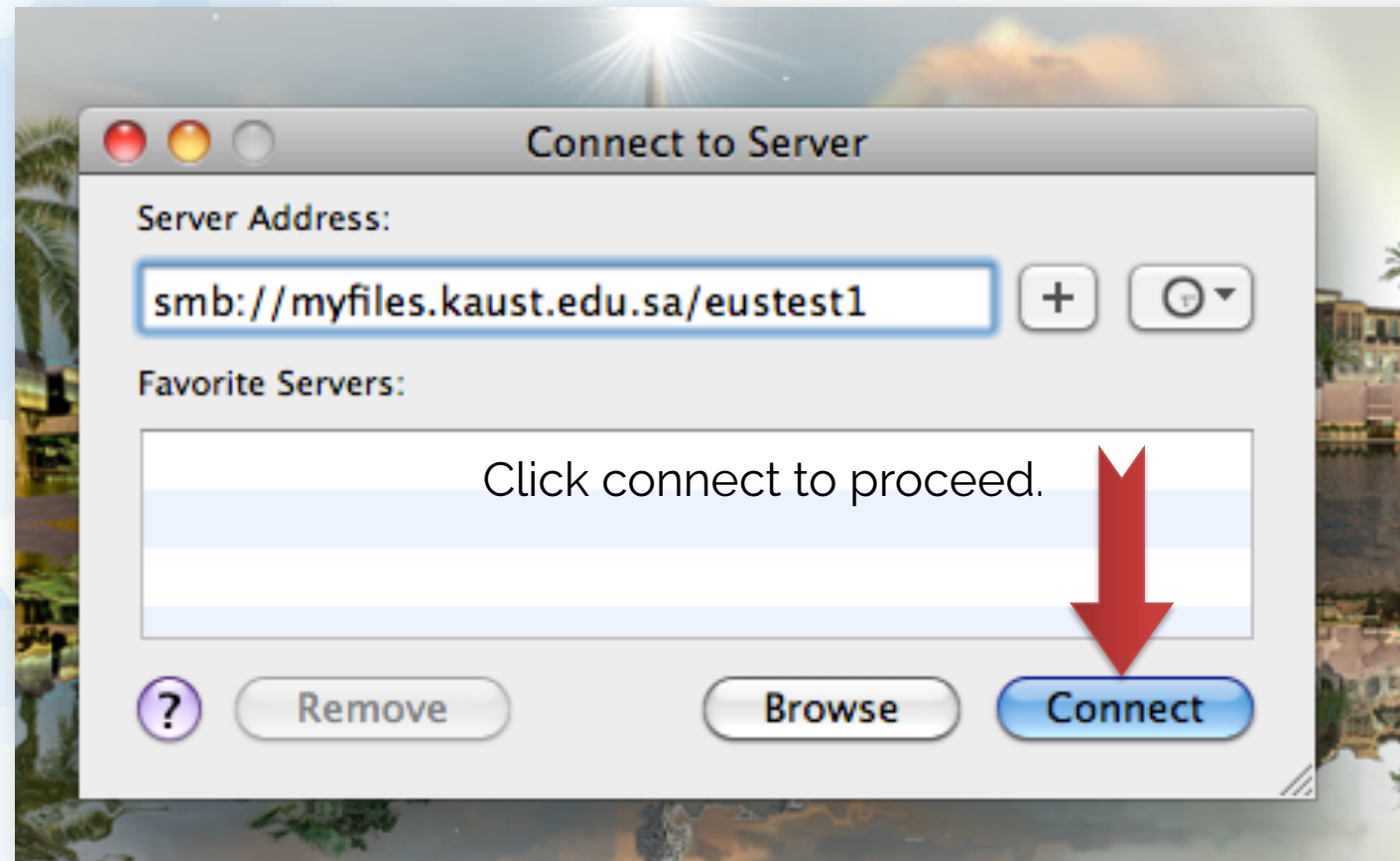
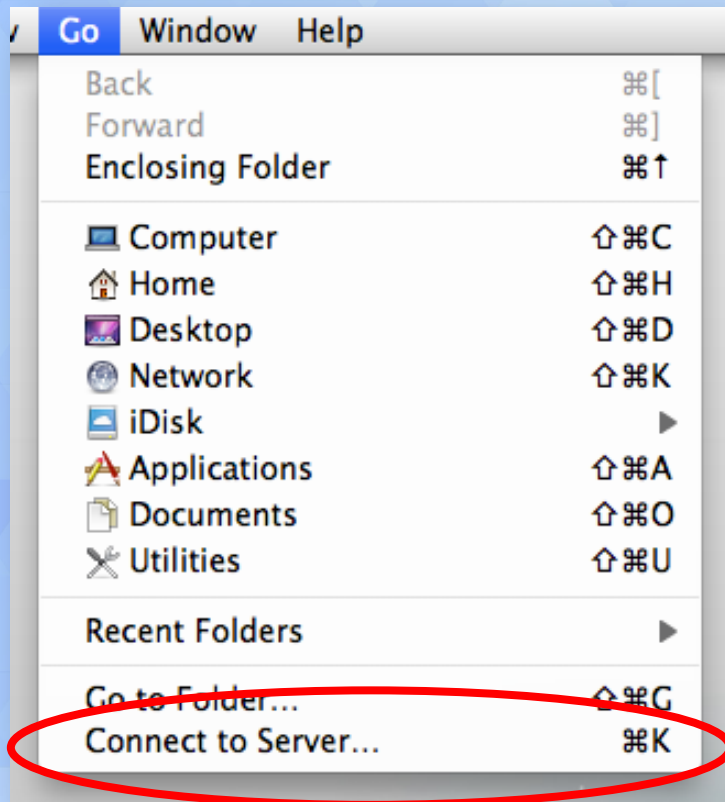
KAUST Provided Device: Mac OSX

Upon login, Personal Storage will automatically mounted on the Desktop as a network drive. To view / access, simply double click on the folder... see screen shot below.



Personal Device – Mac OSX

For those machines that are not on the KAUST Domain, such as a personal machine or laptop, P-drive will not automatically mapped upon login. To mount, press "cmd" + "K" then Connect to Server window will pop-up. Otherwise, go to finder then click "Go" then select "Connect to server"... See screen shot below.



Personal Device – Mac OSX

Continued



Click connect to proceed.



Personal Device – Mac OSX

Continued



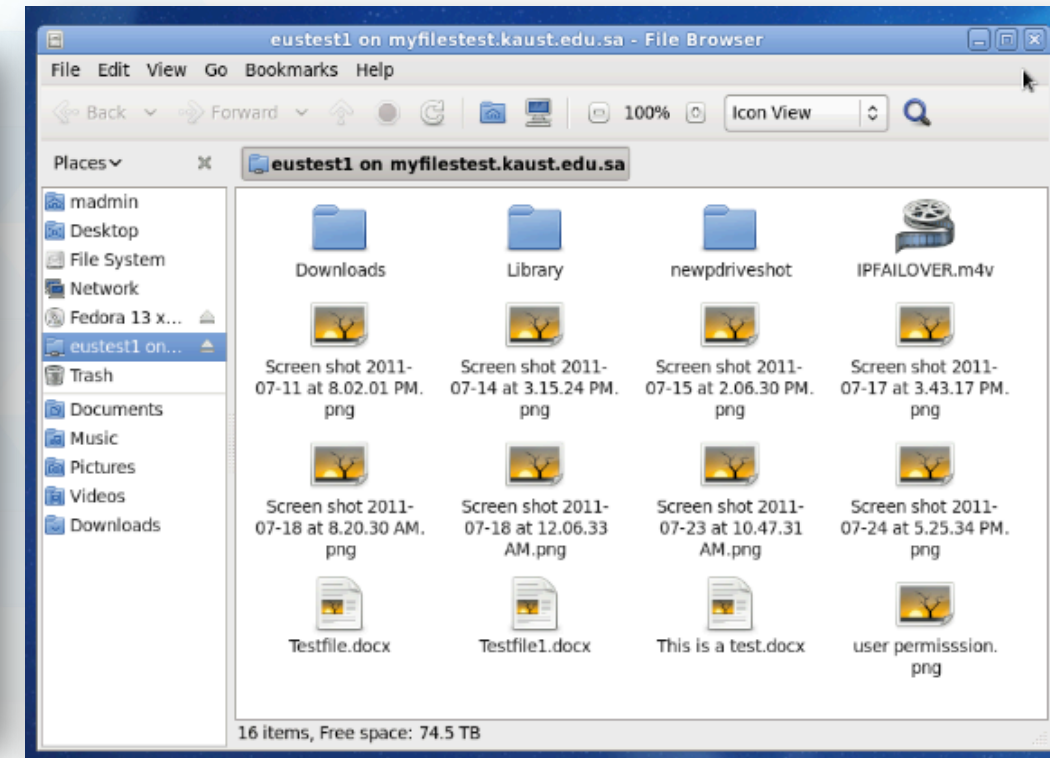
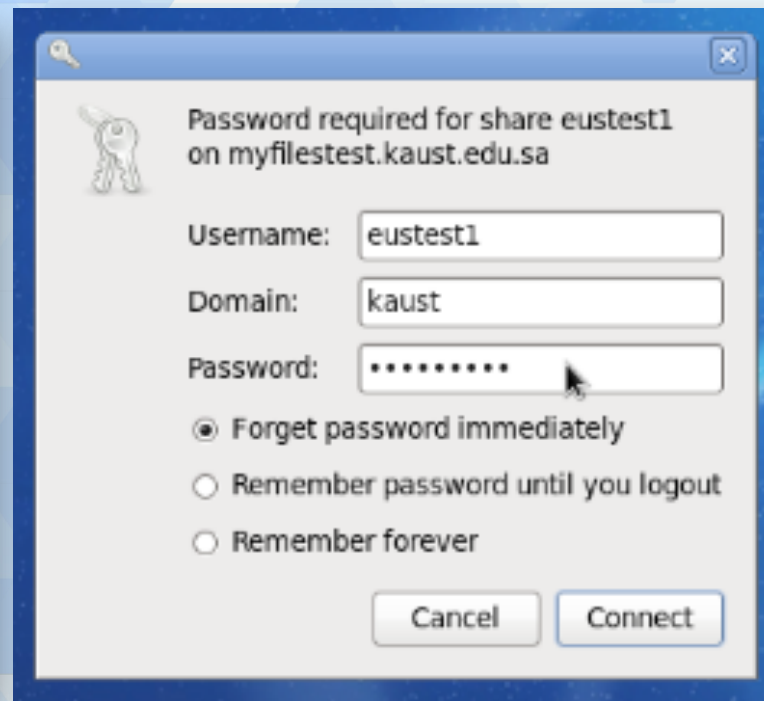
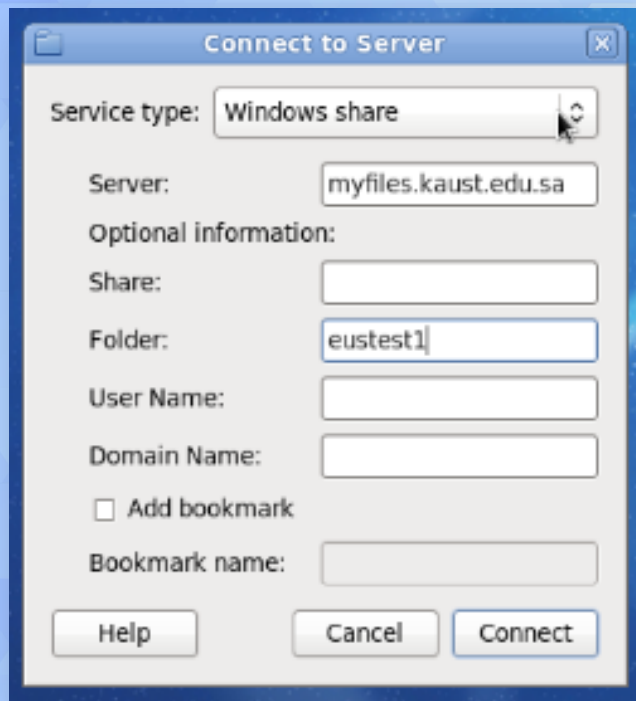
This screen shows that you've successfully mounted the network drive.

Linux Fedora

Connect to Server

Authentication

File Browsing
User home folder will mount on the desktop



Linux RedHat

Connect to Server

Authentication

File Browsing
User home folder will mount on the desktop

